



# crewNEWS

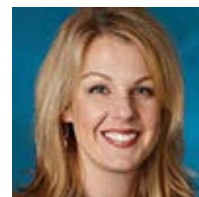
CREW San Diego Quarterly Newsletter

Issue 3 | Fall 2013

## WHAT'S INSIDE

- [President's Message](#)
- [Done Deals](#)
- [Member News](#)
- [Charity Wine Tasting Event](#)
- [Annual Platinum Sponsor Spotlight](#)
- [Annual Gold Sponsor Spotlight](#)
- [Event Photos](#)
- [CREW Network Convention](#)
- [Save the Date](#)

## President's Message



**KELLIE HILL**  
2013 CREW San Diego President

### Today AND Tomorrow

I turned on the radio the other day to hear yet another song advocating the message 'live for tonight' and 'don't worry about tomorrow!' Pick an artist, any artist...Nelly, Kesha, Miley, etc. and you will hear the same. Our culture seems to be heading in the direction of 'focus on now, look to the present, and do not think about the future'. The pleasure of now far outweighs the pleasure of tomorrow, or so pop culture would like you to believe. I do not subscribe to this belief. Throughout my life, both personally and professionally, I have truly experienced the fact that good things do come to those that wait. CREW is a perfect example of that statement. The organization is stronger now in its 30th year of existence than it ever has been. Our membership has increased over 30% this year, our events are having record attendance, and our committee members and board members are dedicated professionals who are making invaluable contributions to the organization and its continued success. This success did not come overnight. It was through the labor and the belief that the members involved were building something that would last and carry on from generation to generation. I am so very excited to be a part of an organization that has persevered and has continued to improve throughout the years.

Where you are in your career today is something to be celebrated, and where you are going is something on which to remain laser-focused. It is the relationships you create, the knowledge you gain, and the leadership training you receive through the CREW Network that will make tomorrow even sweeter than today.

[Back to Top](#)

## 2013 BOARD OF DIRECTORS

### PRESIDENT

**Kellie Hill**  
CBRE  
[kellie.hill@cbre.com](mailto:kellie.hill@cbre.com)

### VICE PRESIDENT / PRESIDENT ELECT

**Jennifer Shumaker**  
Douglas Allred Company  
[shu@dac-usa.com](mailto:shu@dac-usa.com)

### 1ST VICE PRESIDENT ~ MEMBERSHIP

**Jackie Hailey**  
Johnson & Jennings  
[jhailey@johnsonandjennings.com](mailto:jhailey@johnsonandjennings.com)

## CREW San Diego Done Deals



Project	CREW Members
Teris Aptus	Gensler, Johnson & Jennings
Hazard Center, Prudential	PM Realty Group, Johnson & Jennings
SAIC	Jones Lang LaSalle, Johnson & Jennings
Parsons	CBRE, Johnson & Jennings

**2ND VICE PRESIDENT - SPONSORSHIP**

**Anne Bengé**

Unisource Solutions  
[abenge@unisourceit.com](mailto:abenge@unisourceit.com)

**TREASURER**

**Susan Steele**

Deloitte  
[sussteele@deloitte.com](mailto:sussteele@deloitte.com)

**SECRETARY**

**Lori Ann Stevens**

Turner Construction  
[lstevens@tcco.com](mailto:lstevens@tcco.com)

**DIRECTOR OF EDUCATION / PROGRAMS**

**Amanda Chandler**

Unisource Solutions  
[achandler@unisourceit.com](mailto:achandler@unisourceit.com)

**DIRECTOR OF  
 MARKETING COMMUNICATIONS**

**Jill Hogan**

West Coast Retail Management  
[jhogan@wcretail.com](mailto:jhogan@wcretail.com)

**DIRECTOR OF SPECIAL EVENTS**

**Amber Mauer**

The Miller Hull Partnership  
[amauer@millerhull.com](mailto:amauer@millerhull.com)

**NATIONAL DELEGATE**

**Allison Beall**

Pacific Building Group  
[abeall@pacificbuildinggroup.com](mailto:abeall@pacificbuildinggroup.com)

**IMMEDIATE PAST PRESIDENT**

**Tiffany English**

Ware Malcomb Architects  
[tenglish@waremalcomb.com](mailto:tenglish@waremalcomb.com)

**CHAPTER ADMINISTRATOR**

**Erika Chaker**

Phone: 858.525.1563  
 1201 Wakarusa Drive, Suite D  
 Lawrence, KS 66049  
[crewsd@crewnetwork.org](mailto:crewsd@crewnetwork.org)  
[erika.chaker@outlook.com](mailto:erika.chaker@outlook.com)

**IT'S NOT TOO LATE TO  
 BECOME A 2013 CREW SAN  
 DIEGO SPONSOR!**

EDF	Johnson & Jennings, The Brickman Group
Northrop Grumman Building 8	Pacific Building Group, Unisource Solutions, CBRE
LifePro Financial	Cassidy Turley, Unisource Solutions, IES, Facility Solutions
Activision / High Moon Studios	Ware Malcomb, Unisource Solutions
Lobby Remodel	Dowling Construction, BioMed Realty
Randy Jones BBQ Renovations	Dowling Construction, PM Realty Group
Qualcomm AI Suite 102E	Commercial Builders, Qualcomm
525 B Street – City of San Diego	Commercial Builders, Gensler
Arrowhead General Insurance	Arrowhead General Insurance, Cassidy Turley, ID Studios
Canyon Corporate	CBRE, Unisource Solutions
CBRE Downtown Office	Gensler, CBRE
ViaSat Café Pavillion	Pacific Building Group, Gensler, Unisource Solutions
Qualcomm Building AE Tenant Improvement	Pacific Building Group, ID Studios
Peaceful Paws	Pacific Building Group, CBRE, Ware Malcomb
10180 Telesis Ct. Lobby Renovation	Pacific Building Group, Ware Malcomb
San Diego Endoscopy	Pacific Building Group, CBRE, Ware Malcomb
One Pacific Heights Tenant Improvement	Pacific Building Group, Facility Solutions
Regents Park Tenant Improvements	Pacific Building Group, Facility Solutions
Synergy and Sports Tek	Pacific Building Group, Kilroy Realty, Unisource Solutions
Genentech, Inc. Debottlenecking Modifications	Ferguson Pape Baldwin Architects, DPR Construction
Genoptix, Inc. Laboratory and Office Tenant Improvement	Ferguson Pape Baldwin Architects, DPR Construction
HCP Life Science Estates Spec Laboratory	Ferguson Pape Baldwin Architects, DPR Construction
Pacira Pharmaceuticals, Inc. Tenant Improvements	Ferguson Pape Baldwin Architects, DPR Construction

**Didn't see your CREW San Diego Done Deal?**  
 Please contact **Jill Hogan, [jhogan@wcretail.com](mailto:jhogan@wcretail.com)** to be included.

**Sponsor benefits include:**

- Year-round Recognition
- Complimentary Tickets to Luncheons
- Ad Space
- Special Event Passes
- Golf Tournament Tickets
- A description about your company and web link in an issue of our quarterly newsletter

**Annual Sponsorships Offered:**

- Platinum Sponsor: \$4,000
- Gold Sponsor: \$3,000
- Silver Sponsor: \$2,000
- Bronze Sponsor: \$1,500
- Program & Event Sponsorships Available!

Please contact [Anne Bengé](#) for more information or download sponsorship information [here](#).

*We would like to take this opportunity to thank our annual sponsors for all of their support throughout the year. Your contributions make it possible for the foundation of CREW San Diego to flourish as one of San Diego's premier local and national commercial real estate organizations.*

**CREWBIZ**

**MEMBERS:**  
Set up your CREWBiz profile NOW to be entered in our quarterly gift card drawing.

Give us 15 minutes and we'll give you 8,000 trusted connections!



**WHAT IS CREWBIZ™?**  
CREW Network's online business networking tool developed exclusively for CREW Network members.

Increase your visibility and business networking to 8,000 professionals across

[Back to Top](#)

## Member News

### THREE EXCEPTIONAL CREW MEMBERS NAMED 40 UNDER 40 WINNERS – 2013 BY SD METRO

SD Metro has announced the winners of its 40 Under 40 Awards for 2013, a group of men and women who represent some of the best and brightest minds of San Diego County. Congratulations to **Tracy Nordost Frey, Amber Mauer** and **Susan Steele** for this outstanding achievement! This year's winner will be honored at an awards luncheon on September 26th at the Sheraton Hotel & Marina on Harbor Island.

#### TRACEY NORDOST FREY



**Tracey Nordost Frey**

Turner Construction Company

**Tracey Nordost Frey** is the marketing manager for Turner Construction Co., where she is responsible for strategic planning, multi-media marketing and branding. She leads the marketing team in proposal, brochure and presentation strategy and content and creates and manages advertisement campaigns and production. Frey's work on Turner pursuits has helped maintain the company's position as the No. 1 builder in national rankings. Her work has helped Turner win some of the most prominent and prestigious construction projects in San Diego, including the \$185 million San Diego New Central Library and the \$470 million Green Build Terminal 2 expansion project at San Diego Lindbergh International Airport. She is a recipient of a Turner Staff Award, a member of NAIOP San

Diego, Commercial Real Estate Women of San Diego and the San Diego Hotel-Motel Association. Frey has shared her expertise to benefit minority businesses in the construction industry. She also volunteers at Rady Children's Hospital working with children and families enduring illnesses. Frey is a founding committee member of Turner's Annual Charity Golf Tournament which annually raises \$50,000 for local charities.

#### AMBER MAUER



**Amber Mauer**

The Miller Hull Partnership

In 2011, **Amber Mauer** was recruited by the national award-winning architecture firm, The Miller Hull Partnership, to facilitate the opening of its San Diego office. Based in Seattle, the firm had a lot riding on the expansion, as it was the partnership's first and only branch office. The firm had been selected as the design architect for the San Ysidro Land Port of Entry, a \$400 million federally funded project designed to reduce wait times and increase security at the border. Mauer proved to be the perfect choice, evidenced by the fact that the local office is growing and taking on more significant projects, including the San Diego Community College District's Mesa Campus cafeteria, stockroom and bookstore; Chula Vista Nature Center; Port of San Diego On-Call Design Review, San Diego Zoo renovations, Kettenburg Marina and Caltrans on-call contract. Mauer is active with the South County Economic Development Council, the Downtown San Diego Partnership, the Urban Land Institute and Commercial Real Estate Women. Before joining Miller Hull, Mauer was the strategic development director

North America looking to do business in your area – looking to do business with you!

## CREW SAN DIEGO WOULD LIKE TO WELCOME OUR 3<sup>RD</sup> QUARTER NEW MEMBERS

Welcome to CREW San Diego! We invite you to join a network of commercial real estate professionals committed to educating and advancing women in the industry. If you haven't already, please take advantage of the many programs and events the chapter offers. To get connected, contact any one of the board members listed for more information. Again, welcome and we look forward to seeing you soon!

**Leanne Barbat**  
Kimball, Tirey & St. John LLP

**Wendy Cohen**  
Kitchell

**Anne Geren**  
CBRE

**Michelle Harriss**  
Lot Management/The Red Cow Family of Companies

**Jennifer Hawkins**  
CRESA

**Michaelene Kapson**  
Kimball, Tirey & St John LLP

**Lynn LaChapelle**  
Jones Lang LaSalle

**Kristina LeBrun**  
NOI Strategies

**Darcy Miramontes**  
Jones Lang LaSalle

**Tracey Nordost**  
Turner Construction Company

**Erin Rooker**  
Turner Construction Company

of JMA Architects Inc., a firm specializing in multi-family housing and tribal gaming projects. She is a member of the Junior League of San Diego, the San Diego Police Department's SWAT Foundation and Tables for Tots benefiting Rady Children's Hospital.

## SUSAN STEELE



**Susan Steele**

Deloitte Tax LLP

As a senior manager at Deloitte Tax LLP, **Susan Steele** is responsible for serving clients primarily in the real estate industry, as well as high net worth individuals. In her role, she works at advising her clients on tax planning considerations while specializing in REITs, real estate owners, operators and investors, private equity, tax deferred exchanges and involuntary conversions and family office consultation. She is involved in Deloitte's Women Initiatives (WIN) and is passionate about helping other women reach their potential while balancing family and other interests. Steele is very active with facilitating learning and development programs for many Deloitte professionals. She has taught tax technical courses throughout the

United States and abroad. Steele is on the board of Junior Achievement of San Diego and Imperial Counties and is a member of CREW's (Commercial Real Estate Women) board of directors. On an annual basis she teaches business ethics at Kearny High School where the students explore ethical dilemma decision making and the importance of ethics in the workplace and our community.

## Charity Wine Tasting Event

30TH ANNIVERSARY ANNUAL CHARITY  
**Wine Tasting & Silent Auction**  
**WED., OCT. 30**  
5:30 pm – 8:00 pm  
Master Sponsor:  
**G/M Business Interiors**  
"Elevate your Workplace"<sup>™</sup>  
**Herman Miller**  
REGISTER TODAY THE GRAND DEL MAR

[Back to Top](#)

## Annual Platinum Sponsor Spotlight



"Experience is everything", that's our motto and it sums it up nicely. Thirty-three years of experience applied to provide the best experience for our partners and clients. The Good & Roberts experience is not only about

the end result but how we manage and conduct ourselves to get there. This is where our focus is unique.

We have operated under one guiding principle for over 33 years – treating others the way we want to be treated. In this highly sophisticated and technological age many things have changed, but one thing can never change, and that is the value of a relationship. When we joined CREW San Diego and became acquainted with the membership we quickly chose to fully

[Back to Top](#)

---

## CREW SAN DIEGO'S 2013 LEGACY MEMBERS

### 2013 LEGACY MEMBERS:

*(joined 2009 and prior)*

Allison Beall  
Anne Bengé  
Dana Bessenecker  
Tara Burns  
Susan Couch  
Debbie Curtis  
Christy Daly-Pranzo  
Deborah Davidson  
Tiffany English  
Bre'an Fox  
Linda Greenberg  
Lisa Gualco  
Jackie Hailey  
Terry Hall  
Kellie Hill  
Jill Hogan  
Carly Kurkiewicz  
Desiree Kay Lawn  
Marilyn Mattson  
Amber Mauer  
Johanna Metz  
Sonia Miró  
Amy Morway  
Mike Raring  
Angela Rauzi  
Jennifer Shumaker  
Rose Silverwater  
Lindsey Smith  
Annalena Thompson  
Ginny Uyeno-Bridy

Legacy Members are those who have been a part of CREW for five (5) years or more and receive extra membership benefits. Please contact [Tiffany English](#), Immediate Past President, for more information.

[Back to Top](#)

---

## CREW SAN DIEGO 2013 ANNUAL SPONSORS

*Platinum:*

support them. CREW San Diego is an association that shares our principles along with our value for relationships.

Good & Roberts, Inc. has demonstrated construction expertise in the local Life Sciences, Industrial, Commercial Office and Brewery industries. We have delivered major complex projects for Gen Probe, Solar Turbines, General Atomics, SeaWorld, Northrop Grumman, Genoptix, Karl Strauss and many more. All our projects are dedicated to delivering the very best value for your dollar; our teams take pride in the quality of the workmanship and the services we offer.

Our growth over the past 34 years has been predominantly internal, stemming from the referrals of our client base and those of other professionals. The growth and development of our professional staff has evolved in a similar manner. We have attracted high-quality, committed professionals and invested in their training, development and growth. As a result of those efforts, we have experienced good growth over the past several years. This has been in no small way also directly related to the success our clients have had in their business and personal pursuits.

We have recently announced our acquisition by C.W. Driver, a trusted leader in our industry. We believe that a larger organization will allow us to provide a wider array of services and more depth. As you know, in our area of the country finding and retaining excellent people is a constant challenge. A larger organization will also mean our employees will benefit from even more and stronger career opportunities.

C.W. Driver and Good & Roberts, Inc. share the same core values. C.W. Driver exceeded our hopes for a firm we can combine with and continue the tradition we have for excellent service, deep expertise, and an environment our clients, partners and employees want to be a part of.





Good & Roberts Inc.  
general contractor ca lic.# 377551



UNISOURCE SOLUTIONS

Gold:



WARE MALCOMB

Silver:



DOWLING  
CONSTRUCTION

[Back to Top](#)



Bronze:



BRICKMAN  
Advancing the American Landscape Since 1999



IN-KIND Sponsors:



THE DAILY TRANSCRIPT  
SAN DIEGO'S BUSINESS DAILY  
www.sddt.com



[Back to Top](#)

## Annual Gold Sponsor Spotlight

### WARE MALCOMB



**Tiffany English, CID,  
LEED AP**

*Ware Malcomb*

**Ware Malcomb** is a contemporary and expanding full service architectural design firm. Established in 1972, we provide professional planning, architecture, interior design, graphic design, and civil engineering services to corporate, commercial developer and public/institutional clients throughout the world.

With 14 office locations throughout the United States, Latin America and Canada, our expertise includes office, interiors, master planning, retail, hospitality, industrial/distribution, healthcare, science & technology, education, public/government, residential/senior housing, auto, renovation, and sustainable design. A corporate member of the U.S. Green Building Council and Canada Green Building Council, we are available to provide sustainable design, LEED® Design, and LEED® Management services in accordance with the specific objectives for our

clients' projects.

**Ware Malcomb** has maintained a presence in San Diego since 1985. Our San Diego team has completed thousands of projects in San Diego and has established relationships with the local real estate community. Recent projects include Voit San Diego, Active Network, Gunderson Dettmer, CSA Travel Protection, and Marwaha Group.

We value the contributions that women make to our firm's success and we have been a proud member of CREW San Diego since 2005. Tiffany English, our San Diego Principal, Interior Architecture & Design, is currently serving as the Immediate Past-President and is on CREW National Network's Leadership Planning Committee, applying over 15 years of design and leadership experience to the positions.



We appreciate the CREW Network as the industry's premier business networking organization and applaud it for its dedication to influencing the success of the commercial real estate industry by advancing the achievements of women.

For more information about Ware Malcomb, contact:

**Ware Malcomb San Diego**

6363 Greenwich Drive, Suite 175  
San Diego, California 92122  
p. 858.638.7277

Tiffany English, CID, LEED AP  
Principal, Interior Architecture & Design  
[tenglish@waremalcomb.com](mailto:tenglish@waremalcomb.com)  
Twitter: @tslipka

We can also be found on:

- wm | Canvas Blog - [waremalcomb.com/wordpress/](http://waremalcomb.com/wordpress/)
- Twitter - [twitter.com/waremalcomb](https://twitter.com/waremalcomb)
- Facebook - [facebook.com/waremalcomb](https://facebook.com/waremalcomb)
- LinkedIn - [linkedin.com/company/ware-malcomb](https://linkedin.com/company/ware-malcomb)
- YouTube - [youtube.com/waremalcomb](https://youtube.com/waremalcomb)
- Pinterest - [pinterest.com/waremalcomb/](https://pinterest.com/waremalcomb/)



CREW San Diego is a chapter of [CREW Network](http://CREW Network)

**CREW SAN DIEGO SUPPORTS:**

[CREW Network Foundation](http://CREW Network Foundation)

was incorporated in 1998 as the 501(c)3, philanthropic arm of [CREW Network](http://CREW Network) and continues to stand as the sole foundation dedicating its resources towards building opportunities for women and girls in commercial real estate. In collaboration with CREW Network, CREW Network Foundation implements and supports a Career Outreach Agenda which cultivates our future Network leaders through participation in a continuum of educational outreach, scholarship and mentoring programs built to introduce the commercial real estate industry to female high school students while connecting female college students and entry-level career women to the resources, support and network they need to gain financial independence and economic self-sufficiency through a successful career in the commercial real estate industry.



[Back to Top](#)



VOIT REAL ESTATE SERVICES

WARE MALCOMB



VOIT REAL ESTATE SERVICES

WARE MALCOMB



VOIT REAL ESTATE SERVICES

WARE MALCOMB



ACTIVE NETWORK

WARE MALCOMB



ACTIVE NETWORK

WARE MALCOMB



CLUNDERSON DITTMER

WARE MALCOMB

FIND CREW SAN DIEGO ON  
YOUR FAVORITE SOCIAL  
NETWORKING TOOLS:



[Back to Top](#)



GUNDERSON DIETMER

WARE MALCOMB



CSA TRAVEL PROTECTION

WARE MALCOMB



MARWAHA

WARE MALCOMB



MARWAHA

WARE MALCOMB

[Back to Top](#)

## Event Photos

THANK YOU TO ALL OF OUR SUMMER SOCIAL SPONSORS!

It was another amazing CREW networking event!





[Back to Top](#)

## 2013 CREW Network Convention & Marketplace

[REGISTER TODAY](#)



Click [here](#) for a full recap of the 2013 Spring Leadership Summit & Council Meeting held in Scottsdale, Arizona in June 2013.

[Back to Top](#)

---

## Save the Date

[Click Here](#)

- September 19** *Education Program-Luncheon: Future of Building Design*
- September 20** *Voting deadline for 2014 CREW Board of Directors*
- October 9-12** *CREW Network Convention & Marketplace – Dallas, TX*
- October 30** *Annual Charity Wine Tasting*
- November 21** *30th Anniversary Celebration with Shaunti Feldhahn*
- December 3** *Holiday Celebration – Members only*

Luncheon Programs will be held from 11:30 – 1:00 p.m.

Sheraton La Jolla (formerly La Jolla Radisson),  
3299 Holiday Court, San Diego, CA 92122

*Event Dates and Locations Subject to Change.*

Please visit [www.crewsandiego.org](http://www.crewsandiego.org) for more information or to RSVP.

[Back to Top](#)